

Rochester Gas and Electric Corporation

Rochester Transmission Project Enhancement

Exhibit E-5

Effect on Communications

This page intentionally left blank.

TABLE OF CONTENTS

<u>Section</u>	<u>Page</u>
EXHIBIT E-5: EFFECT ON COMMUNICATIONS	E-5-1
E-5.1 Introduction	E-5-1
E-5.2 Communication Systems	E-5-1

* * * * *

LIST OF TABLES

Table E-5-1 FCC Tower Index	E-5-1
-----------------------------------	-------

* * * * *

LIST OF FIGURES

Figure E-5-1 Tower Locations	
------------------------------	--

* * * * *

This page intentionally left blank.

EXHIBIT E-5: EFFECT ON COMMUNICATIONS

E-5.1 Introduction

The Rochester Transmission Project Enhancement (RTP Enhancement or the Project) is expected to have no adverse effects on communications (e.g., cellular, television, radio) during either construction or operation. Rochester Gas and Electric Corporation (RG&E or the Applicant) will comply with applicable sections of the latest version of the National Electrical Safety Code (NESC) related to appropriate spacing between power and communication cables.

E-5.2 Communication Systems

A review of the Federal Communications Commission (FCC) databases revealed that there is a total of 48 registered towers located within one mile of the Project. These towers include 41 microwave tower licensees and seven FM radio tower licensees in the FCC databases. There were no AM radio tower or cellular telephone licensees within this range. This information is presented in Table E-5-1, as well as on the symbols shown in Figure E-5-1 – Tower Locations (with counts on each symbol representing locations with multiple tower licenses).

Table E-5-1 FCC Tower Index

Licensee	Call Sign	Facility or License ID
FM Transmission Towers		
MARS HILL BROADCASTING COMPANY, INC	W270BX	150636
ENTERCOM ROCHESTER LICENSE, LLC	WBZA	71204
FAMILY LIFE MINISTRIES, INC	W239BF	157394
DJRO BROADCASTING, LLC	WLGZ-FM	34818
STEPHENS MEDIA GROUP - ROCHESTER, LLC	WRMM-FM	1907
STEPHENS MEDIA GROUP - ROCHESTER, LLC	WRMM-FM	1907
STEPHENS MEDIA GROUP - ROCHESTER, LLC	WRMM-FM	1907
Microwave Towers		
KIMTRON, INC.	WHS480	984783
STEPHENS MEDIA GROUP - ROCHESTER, LLC	WLP212	996421
WBGT, LLC	WPND336	1040293
ENTERCOM ROCHESTER LICENSE, LLC.	WPNM816	1046177
MONROE, COUNTY OF	WPOR388	1048831
MONROE, COUNTY OF	WPOR389	1048832

Licensee	Call Sign	Facility or License ID
MONROE, COUNTY OF	WPOR391	1048834
CONTERRA ULTRA BROADBAND, LLC	WQCM580	2708552
CONTERRA ULTRA BROADBAND, LLC	WQCM992	2709587
CLEARWIRE SPECTRUM HOLDINGS II, LLC	WQHU989	2960133
CLEARWIRE SPECTRUM HOLDINGS II, LLC	WQHU989	2960133
CLEARWIRE SPECTRUM HOLDINGS II, LLC	WQHK718	2940034
CLEARWIRE SPECTRUM HOLDINGS II, LLC	WQHR709	2952686
CLEARWIRE SPECTRUM HOLDINGS II, LLC	WQHR709	2952686
CLEARWIRE SPECTRUM HOLDINGS II, LLC	WQHR709	2952686
CLEARWIRE SPECTRUM HOLDINGS II, LLC	WQIC342	2972923
CLEARWIRE SPECTRUM HOLDINGS II, LLC	WQIC342	2972923
CLEARWIRE SPECTRUM HOLDINGS II, LLC	WQIC342	2972923
CLEARWIRE SPECTRUM HOLDINGS II, LLC	WQIC343	2972924
CLEARWIRE SPECTRUM HOLDINGS II, LLC	WQIC343	2972924
CLEARWIRE SPECTRUM HOLDINGS II, LLC	WQIC372	2972953
WINC COMMUNICATIONS	WQJB807	3030009
WINC COMMUNICATIONS	WQJB807	3030009
WINC COMMUNICATIONS	WQJC416	3031199
WINC COMMUNICATIONS	WQJC416	3031199
CLEARWIRE SPECTRUM HOLDINGS III, LLC	WQMI234	3221405
CLEARWIRE SPECTRUM HOLDINGS III, LLC	WQMI234	3221405
CLEARWIRE SPECTRUM HOLDINGS III, LLC	WQMN574	3231834
CLEARWIRE SPECTRUM HOLDINGS III, LLC	WQMN574	3231834
WBGT, LLC	WQMZ442	3246089
CLEARWIRE SPECTRUM HOLDINGS III, LLC	WQMF369	3216714
CLEARWIRE SPECTRUM HOLDINGS III, LLC	WQMF369	3216714
CLEARWIRE SPECTRUM HOLDINGS III, LLC	WQMF372	3216717
CLEARWIRE SPECTRUM HOLDINGS III, LLC	WQMF372	3216717
CLEARWIRE SPECTRUM HOLDINGS III, LLC	WQMF372	3216717
CLEARWIRE SPECTRUM HOLDINGS III, LLC	WQMF421	3216806
CLEARWIRE SPECTRUM HOLDINGS III, LLC	WQMF425	3216810
CLEARWIRE SPECTRUM HOLDINGS III, LLC	WQMF523	3217089
CLEARWIRE SPECTRUM HOLDINGS III, LLC	WQMF523	3217089
CLEARWIRE SPECTRUM HOLDINGS III, LLC	WQMF529	3217107
CLEARWIRE SPECTRUM HOLDINGS III, LLC	WQMF645	3217425

During site reconnaissance, it was noted that buried fiber optic cables are located within, or adjacent to, portions of the Existing ROW. Adequate separation between the electric transmission lines and communication facilities will be maintained. As part of final design, the

Applicant will utilize Dig Safely New York and will be in communication with third parties that have underground communication cables within or adjacent to the Project right-of-way (ROW) to ensure that the precise locations of the communication facilities are shown on the construction drawings and that appropriate clearances are provided.

A portion of Proposed Line 949 will be located along active railroads. As part of final design, the railroad companies will be consulted to determine the locations of any communication facilities associated with railroad operations. These communication facilities will be protected during construction. Railroad communication facilities currently coexist with other electric transmission facilities within railroad ROWs, and the operation of the electric transmission facilities is not expected to interfere with railroad communications.

Radio and television interference from an electric transmission line may under certain circumstances be caused by corona around the conductor. Corona is a small electrical discharge that creates ionized air close to a transmission line conductor and sometimes results in a small amount of noise that could conflict with radios and televisions. Generally, transmission lines do not cause interference with radio or television reception. The recent mandatory transition of television broadcasts from analog to digital signals further reduces the likelihood of noise interference from a transmission line.

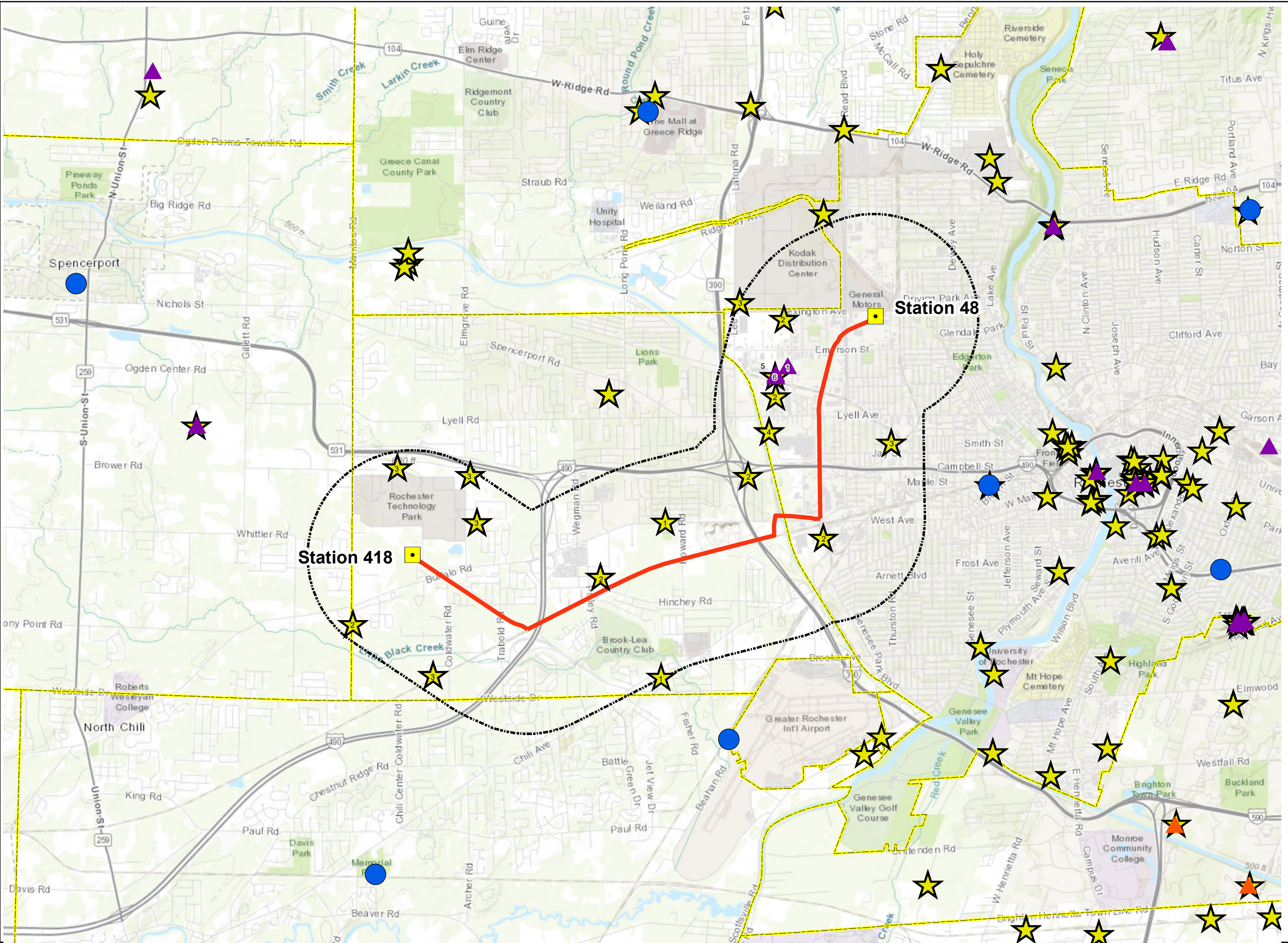
Microwave transmissions are typically point-to-point and interference to microwave transmissions is usually caused by obstructions. The Applicant expects that the Project will not interfere with microwave transmissions because most of Proposed Line 949 will be double circuited with existing lines on similar sized structures.

The Applicant expects that the Project will not interfere with cellular communications because there are no known cellular antennas within close proximity to the Project.

If the Applicant receives any complaints of suspected interference with radio, television or other communications from the Project, the complaints will be evaluated and, if determined to be caused by the Project, the Applicant will resolve any interference.

* * * * *

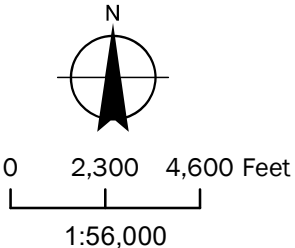
This page intentionally left blank.



Rochester Gas and Electric

Rochester Transmission Project Enhancement

Monroe County, NY



Legend

- Existing Substation
- Proposed Line 949
- 1-Mile Buffer
- FM Transmission Tower
- AM Transmission Tower
- Cellular Tower
- Microwave Service Tower
- Municipal Boundary

Sources/Notes:
1. Basemap: ESRI World Topographic Map. Updated: 2019
2. Municipal Boundary: NYSGIS Cleainguage 2018
3. Acronym definitions are found in the Acronym List in the Application.
4. Numbers on symbols indicate amount of tower licenses at each location.

Tower Locations

FIGURE E-5-1